

Concerto Op.6, No. 2

Arranged by Frederic Palmer

Arcangelo Corelli
(1653-1713)

Vivace

5

2



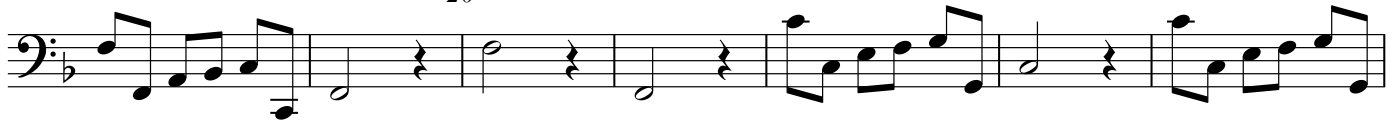
10 **Allegro**

3

15



20



25

30



35



Adagio

40

45



50

Vivace

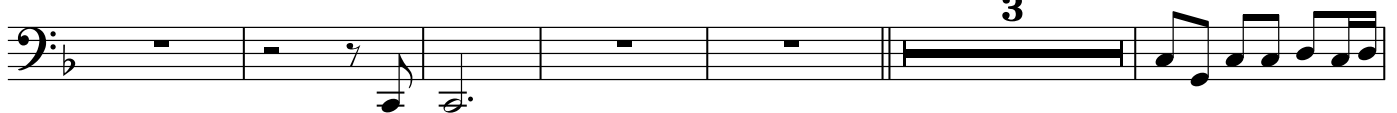
55



60

Allegro

3

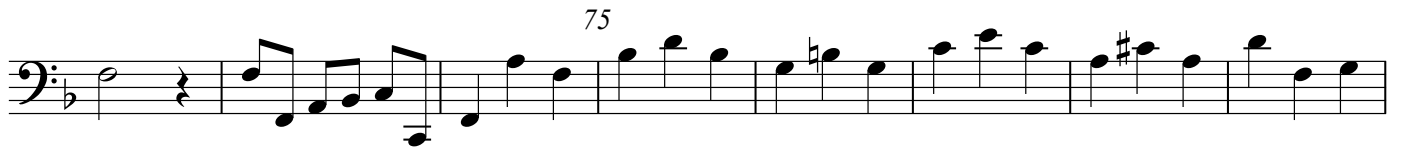


65

70



75



80 85

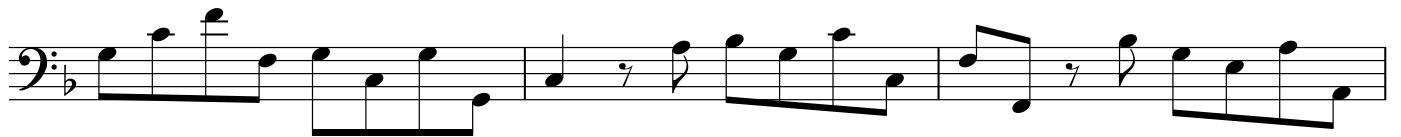
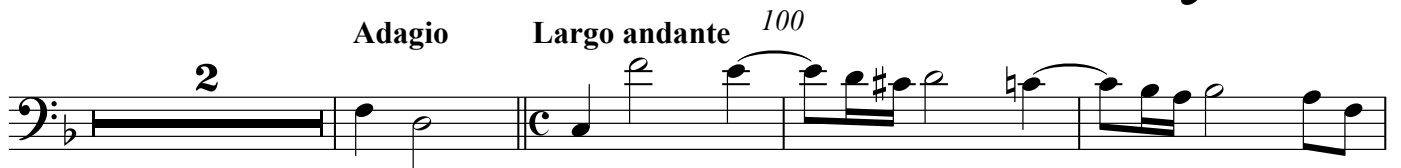


90 95



Adagio **Largo andante** 100

2




105



Allegro 4 5




10




15 20



25 30



35



40



45



50



55 **Adagio**




Grave

5 5



Andante largo

10



15



Allegro

20



25

30 35

40

45

50

55 60

65

70